



Phone: (701) 280-0187  
Fax: (701) 280-9021

**Moorhead Area Public Schools Improvements  
Probstfield Elementary School Addition  
Moorhead, MN**

**Project No. 13-040  
Date: April 4, 2014**

**BID DATE & TIME: Thursday, April 10, 2014 at 2:00 pm**

**ADDENDUM NUMBER 2**

**The following additions, clarifications, deletions and/or changes shall be made to the SPECIFICATIONS:**

**Section 00 1100 - Advertisement for Bids**

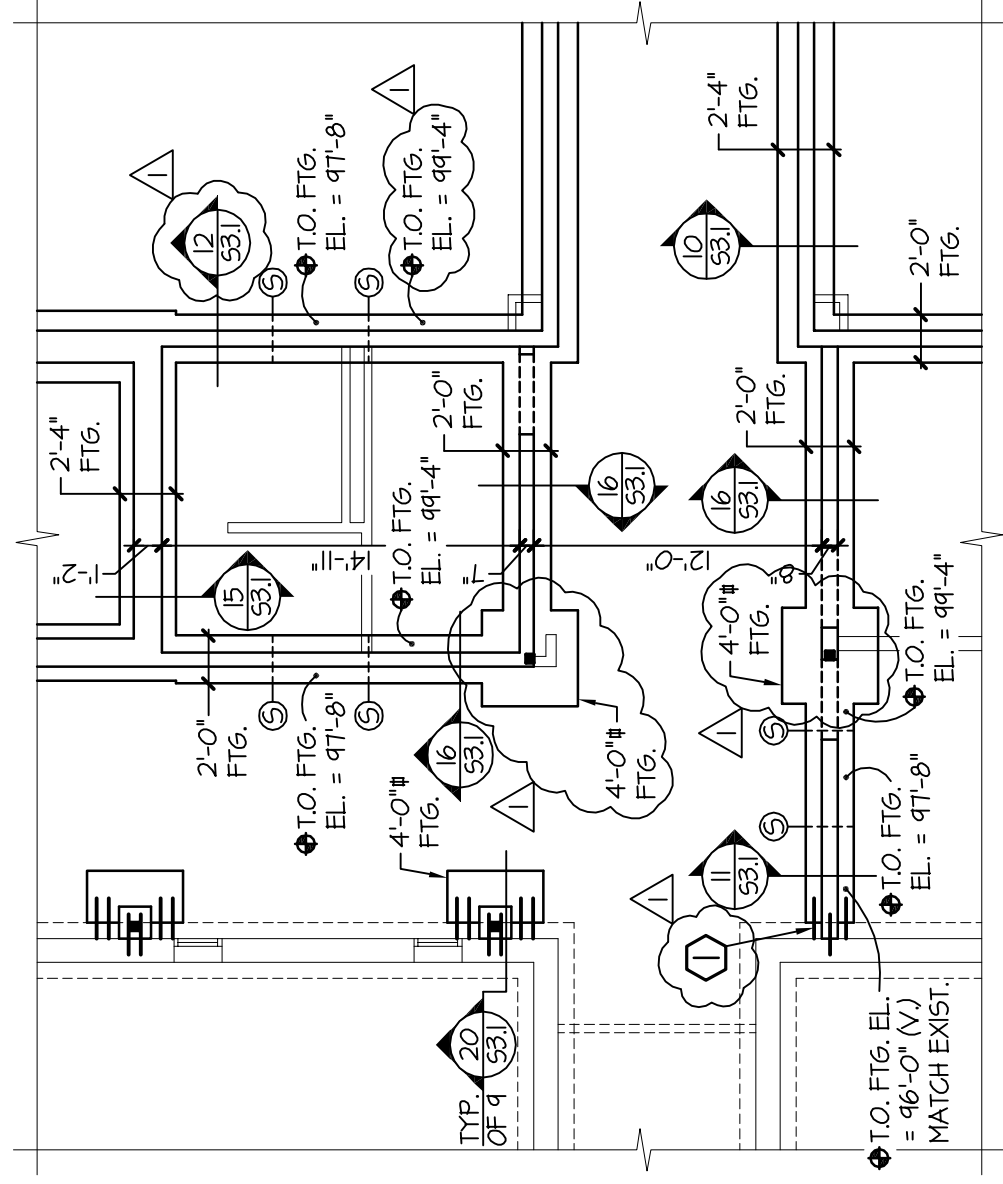
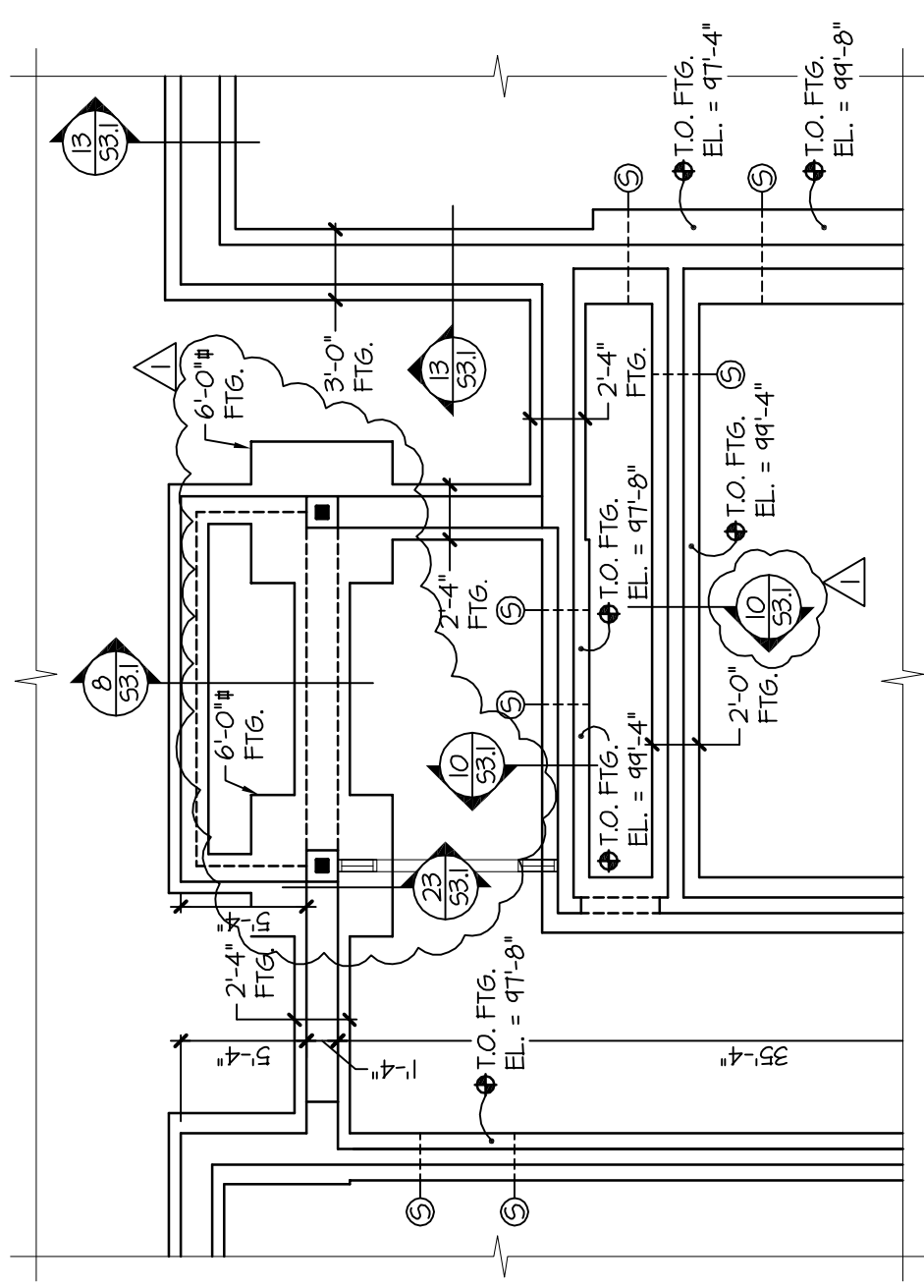
1. Delete reference to separate envelopes for the bidders bond and bid proposal forms. The state of Minnesota only requires one sealed envelope that includes both the bid form and bid bond.

**Section 32 9219 - Seeding**

1. Paragraph 3.06 add B. Maintain seeded areas immediately after placement until grass is well established and exhibits a vigorous grow condition or to fall dormancy. Insure growth is established at following spring. Owner will be responsible for watering and the contractor is to coordinate watering activities with owner to comply with one year period. Owner is responsible for watering after final completion.

**END OF ARCHITECTUAL ADDENDUM NUMBER 2**

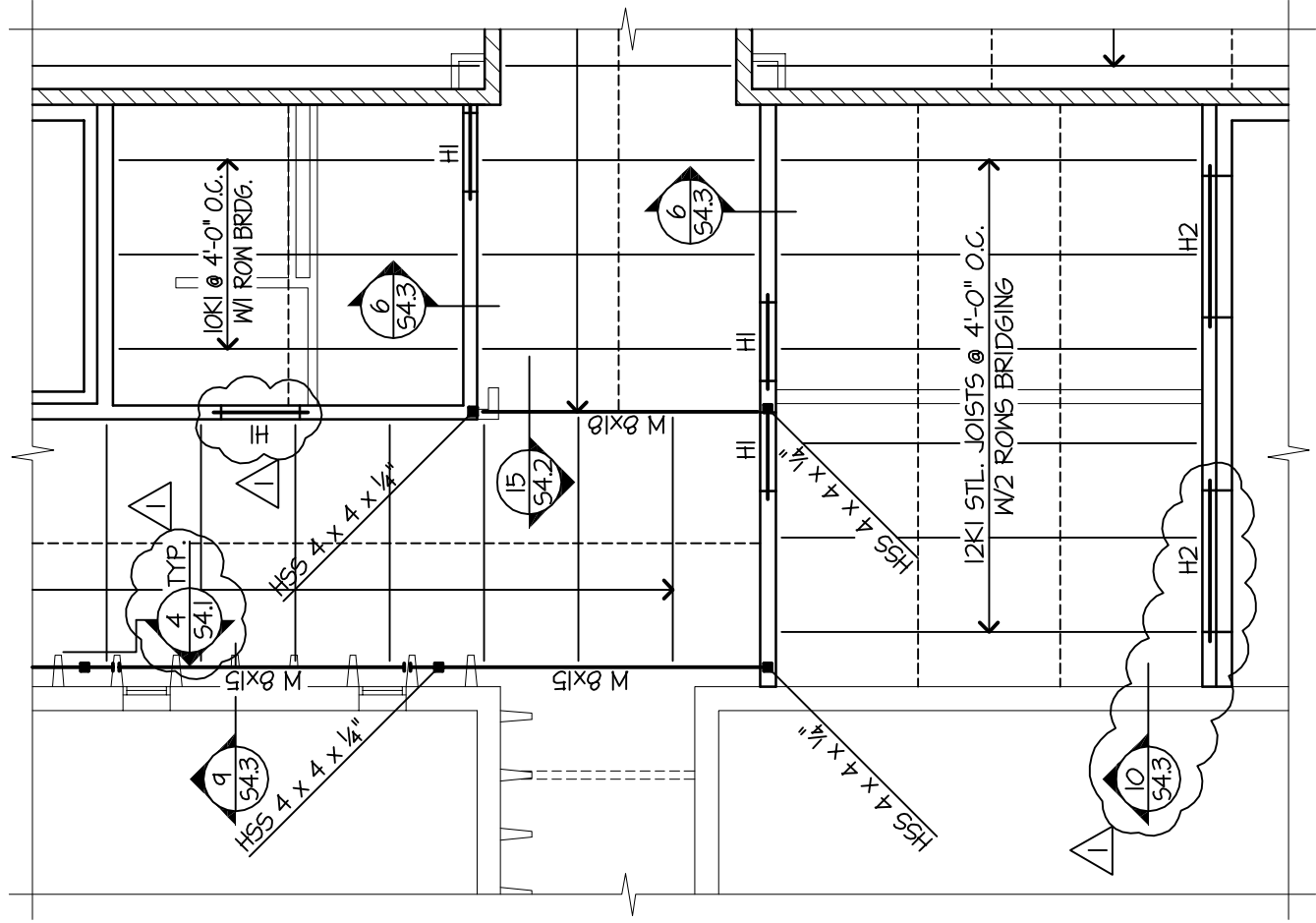
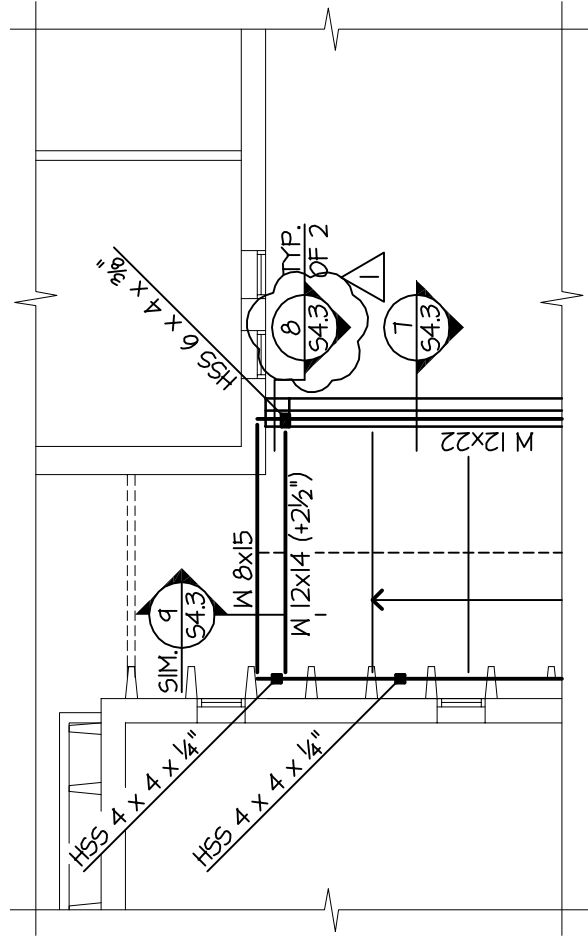
**See additional Addendum No. 2 Items attached Structural and Electrical.**



# FOOTING & FOUNDATION PLAN

$$\frac{1}{8} = \frac{1}{8}$$

⊕ T.O. FTG. EL. = 96'-0" (U.O.N.)



### KEY NOTES:

- ② REINF. 12" CMU WALL W/2 - #5 @ 2'-0" O.C. S.D. 14/54.1 (PLACE BARS 3/4" FROM EACH FACE SHELL).
- ③ REINF. 12" CMU WALL W/2 - #5 @ 4'-0" O.C. S.D. 14/54.1 (PLACE BARS 3/4" FROM EACH FACE SHELL).
- ④ 4" TOTAL THICKNESS MECHANICAL FLOOR SLAB OVER 1", TYPE 'C' 22GA. DECK. S.D. 11/54.1 REINF. W/ 6x6 - W2.9xW2.9 OR NOVOMESH 850 OR EQUIVALENT.
- ⑤ 1000S200-68 MTL. STUDS @ 1'-4" O.C.

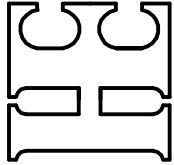
LINTEL SCHEDULE		
MARK	LINTEL	DETAILS
L1	W 8x10	15/54.1
L2	W 8x18	15/54.1
L3	W 8x21 W/ 3/8" LINTEL P	15/54.1
L4	W 16x31	15/54.1
L5	W 8x24 W/ 3/8" LINTEL P	15/54.1

(PARTIAL)



## LOW ROOF/ MEZZANINE FRAMING PLAN

- ⊕ JST. BRG. EL. = 113'-4"
- ⊕ CANOPY T.O. STL. EL. = 113'-6 1/2"



**HEYER ENGINEERING, PC**  
**STRUCTURAL CONSULTANT**

1020 36th Street SW, Fargo, ND 58103  
(P) 701.280.0949 (F) 701.280.9686

Project Moorhead Area Public Schools Improvements

Probstfield Elementary School Addition

Moorhead, Minnesota

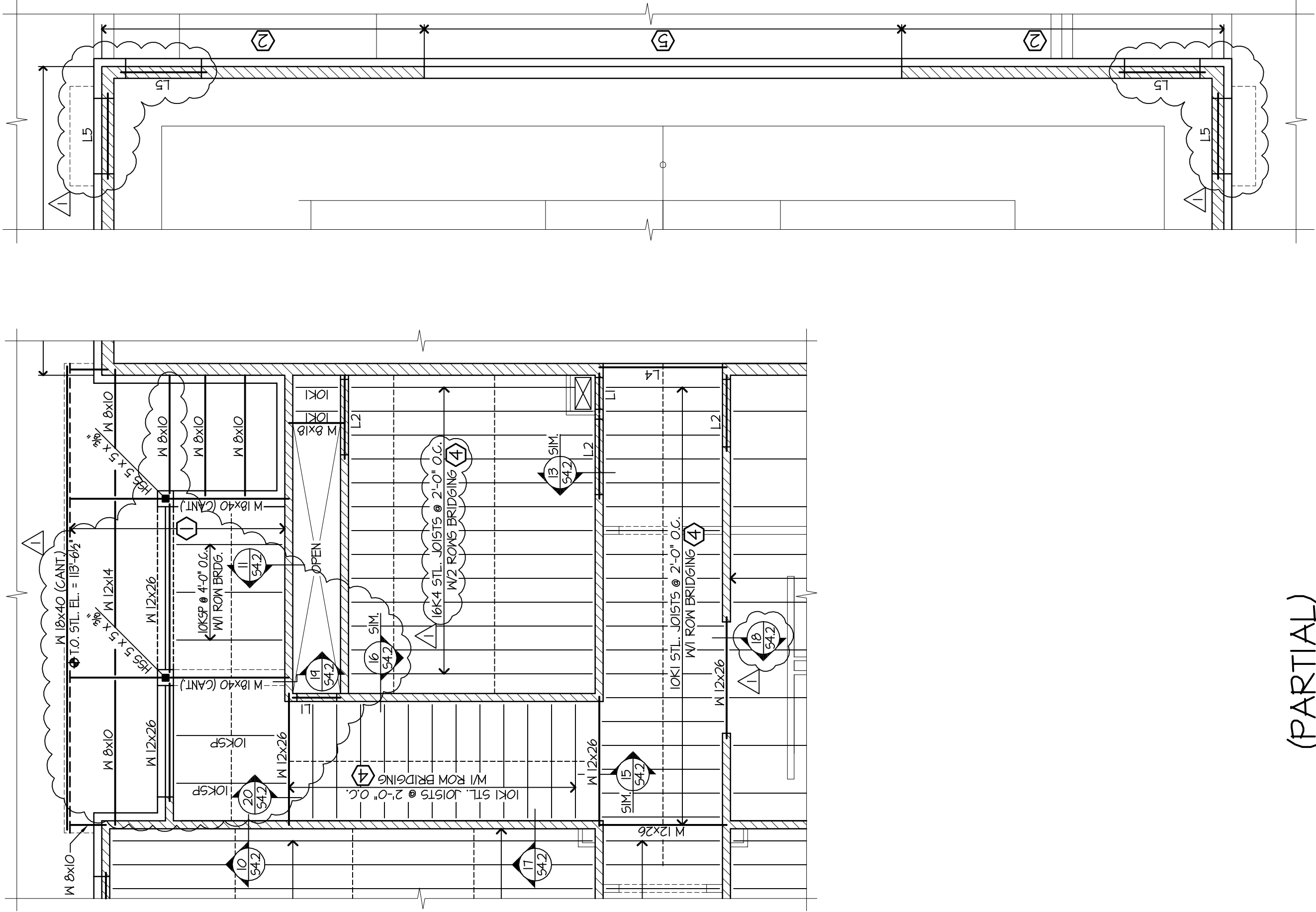
Re: Addendum 1 - Ref. Sheet - 52.1

Sheet No. 5A-2

Job No. 094.0054.20B

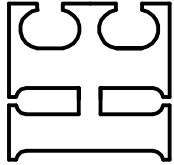
Date 4.2.2014

By EAG/CH



(PARTIAL)  
LOW ROOF/ MEZZANINE FRAMING PLAN

- 10K1 STL. BRG. EL. = 113'-4"
- 10K5P T.O. STL. EL. = 113'-6 1/2"



**HEYER ENGINEERING, PC**  
**STRUCTURAL CONSULTANT**

1020 36th Street SW, Fargo, ND 58103  
(P) 701.280.0949 (F) 701.280.9686

Project Moorhead Area Public Schools Improvements

Job No. 094.0054.20B

Moorhead, Minnesota

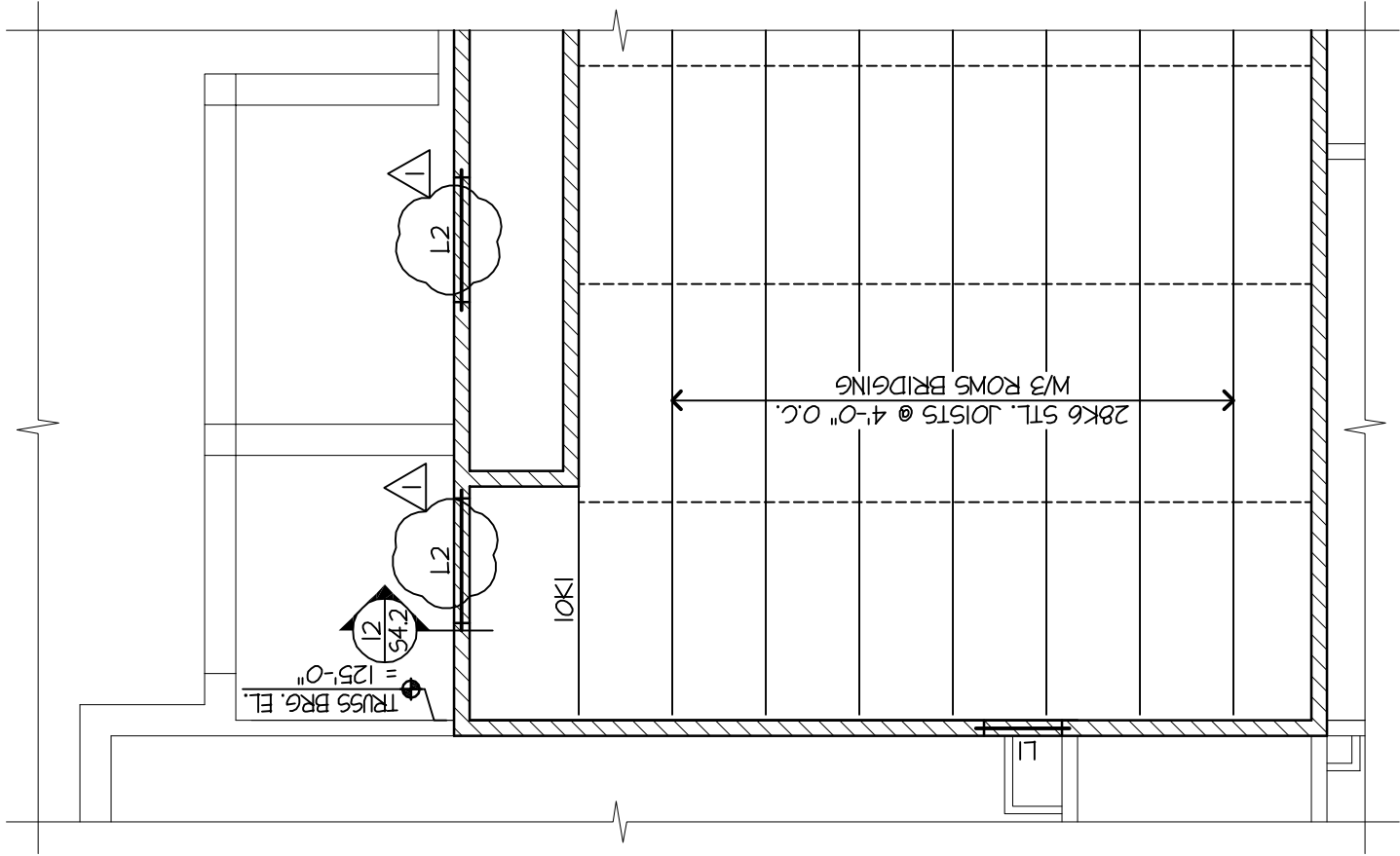
Re Addendum 1 - Ref. Sheet - 52.1

Sheet No. 5A-3

Job No. 094.0054.20B

Date 4.2.2014

By EAG/CH



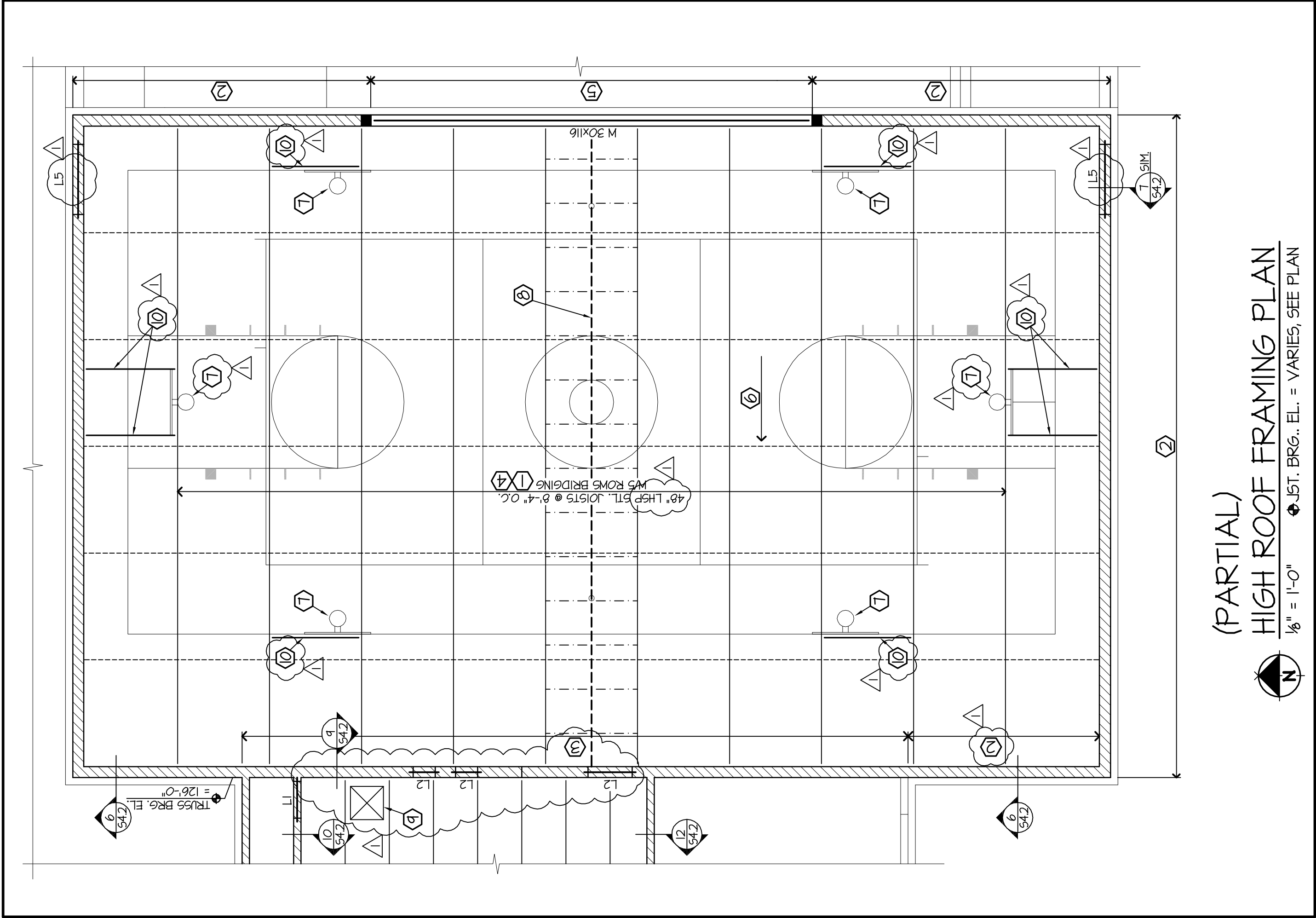
**SHEET NOTES:**

1. 8. VERIFY LOCATIONS OF ROOF TOP MECHANICAL UNITS & OTHER ROOF TOP OPENINGS W/ MECHANICAL & ARCHITECTURAL. S.D. 8/54.I 9/54.I FOR FRAMING.

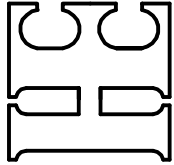
**KEY NOTES:**

- 2. REINF. 12" CMU WALL W/2 - #5 @ 2'-0" O.C. S.D. 14/54.I (PLACE BARS 3/4" FROM EACH FACE SHELL).
- 3. REINF. 12" CMU WALL W/2 - #5 @ 4'-0" O.C. S.D. 14/54.I (PLACE BARS 3/4" FROM EACH FACE SHELL).
- 5. 10005200-68 METAL STUDS @ 1'-4" O.C.
- 9. ROOF HATCH SEE ARCH. - S.D. 8/54.I
- 10. L 4 x 4 x 3/8" SUPPORT BETWEEN JOIST & BETWEEN JOISTS & WALL FOR GOAL SUPPORT. VERIFY SUPPORT REQUIREMENTS W/ GOAL SUPPLIER.

(PARTIAL)  
**HIGH ROOF FRAMING PLAN**  
1/8" = 1'-0" ⬤ JST. BRG.. EL. = VARIES, SEE PLAN



(PARTIAL)  
HIGH ROOF FRAMING PLAN  
1/8" = 1'-0" JST. BRG.. EL. = VARIES, SEE PLAN



**HEYER ENGINEERING, PC**  
**STRUCTURAL CONSULTANT**

1020 36th Street SW, Fargo, ND 58103  
(P) 701.280.0949 (F) 701.280.9686

Project Moonhead Area Public Schools Improvements

Probstfield Elementary School Addition

Moorhead, Minnesota

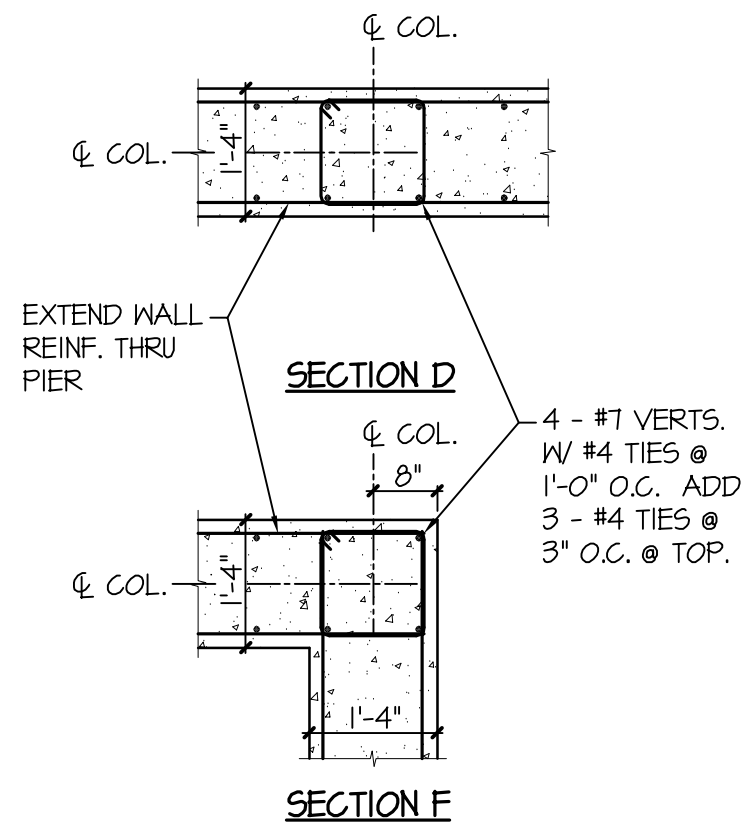
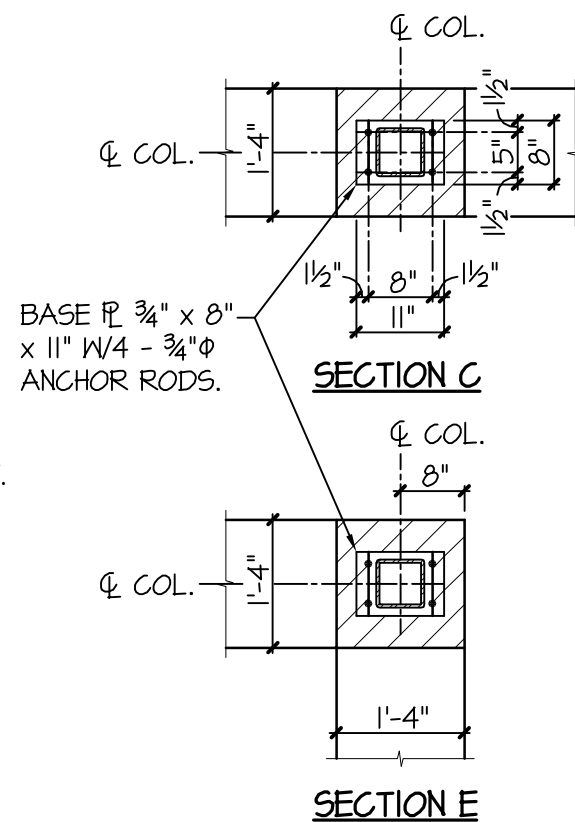
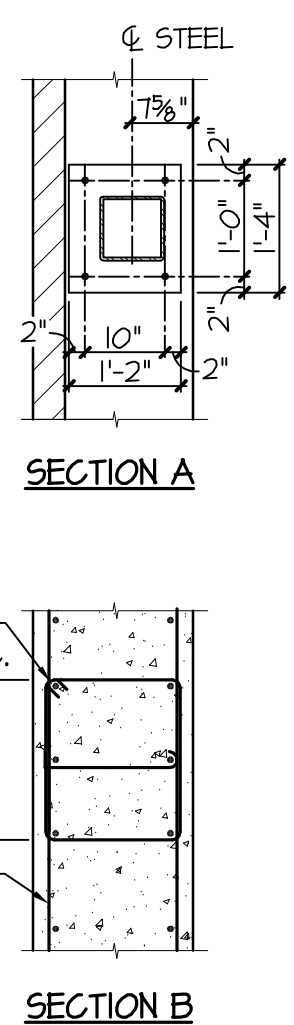
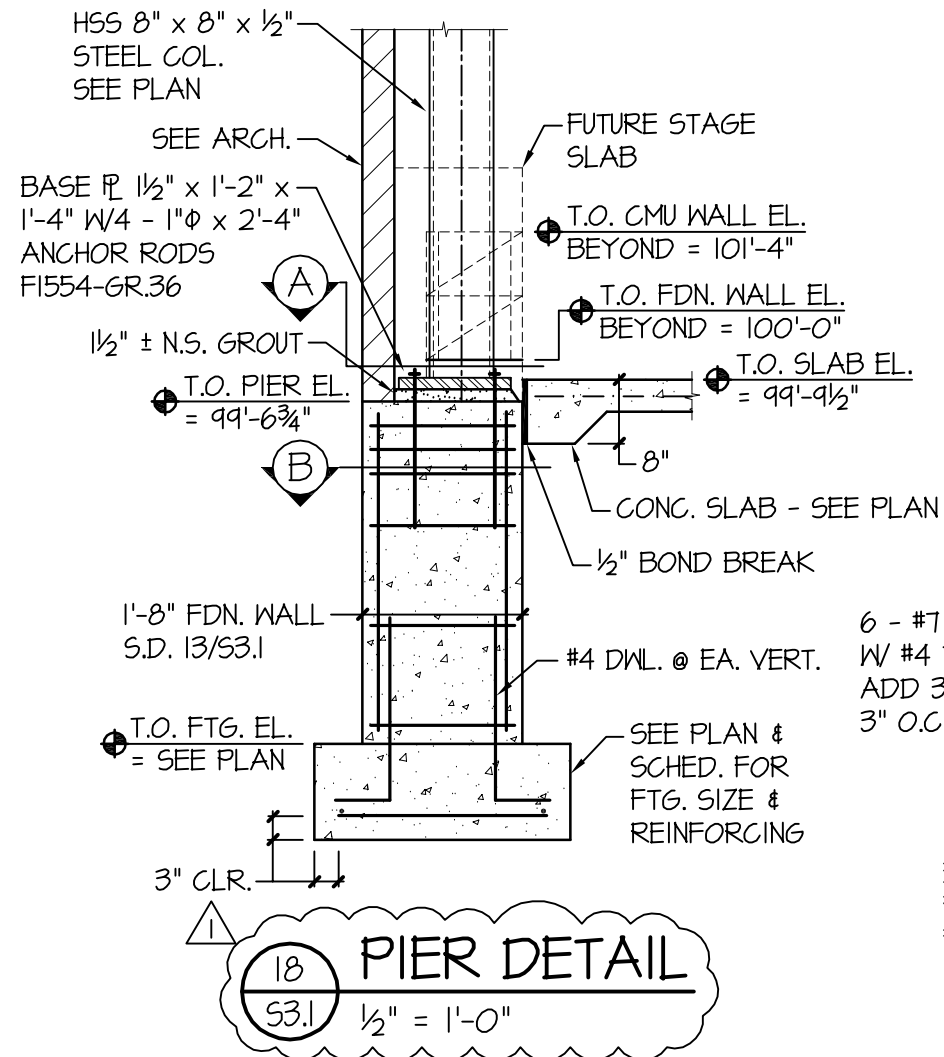
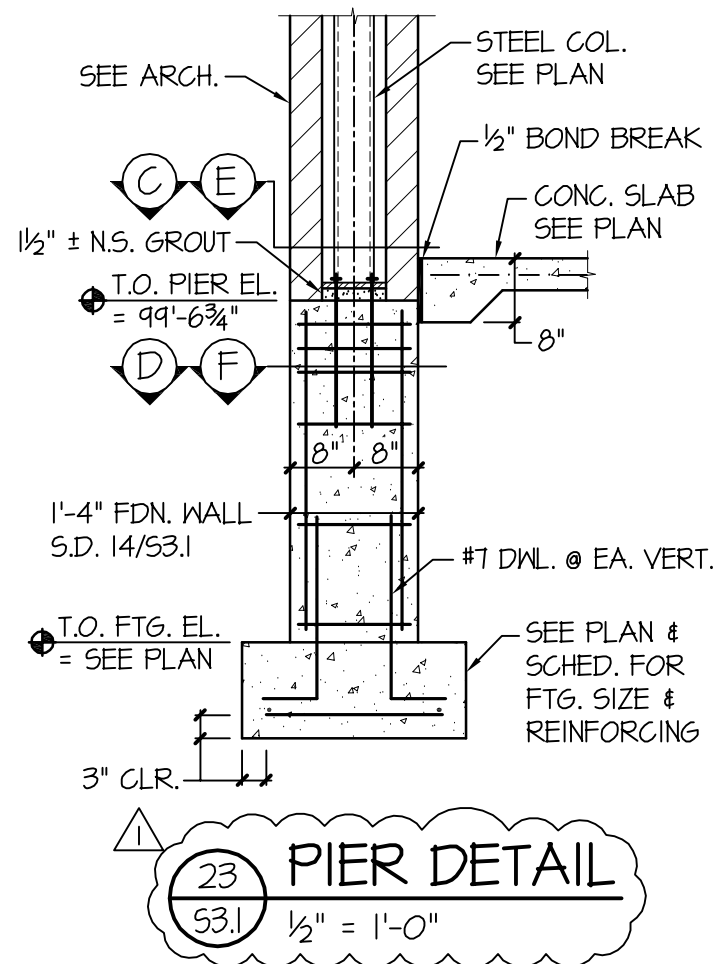
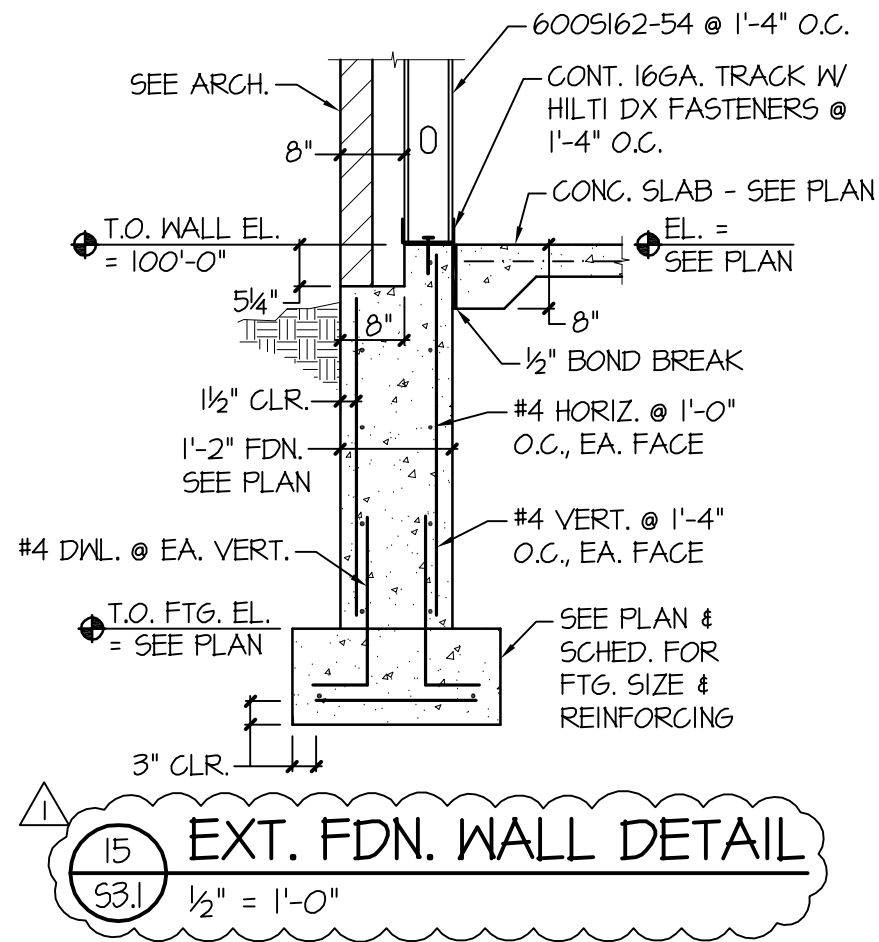
Sheet No. SA-5

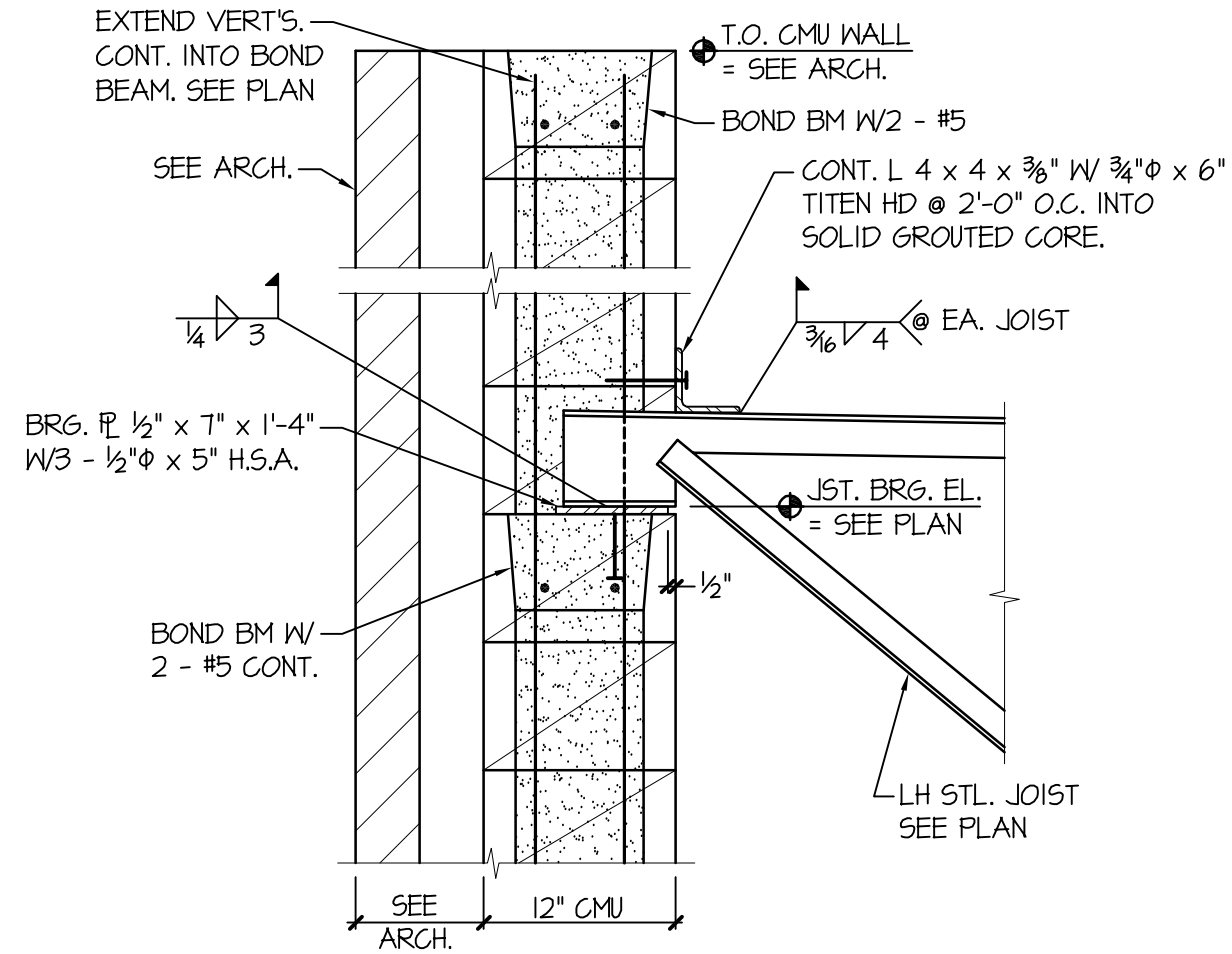
Job No. 094.0054.2013

Date 4.2.2014

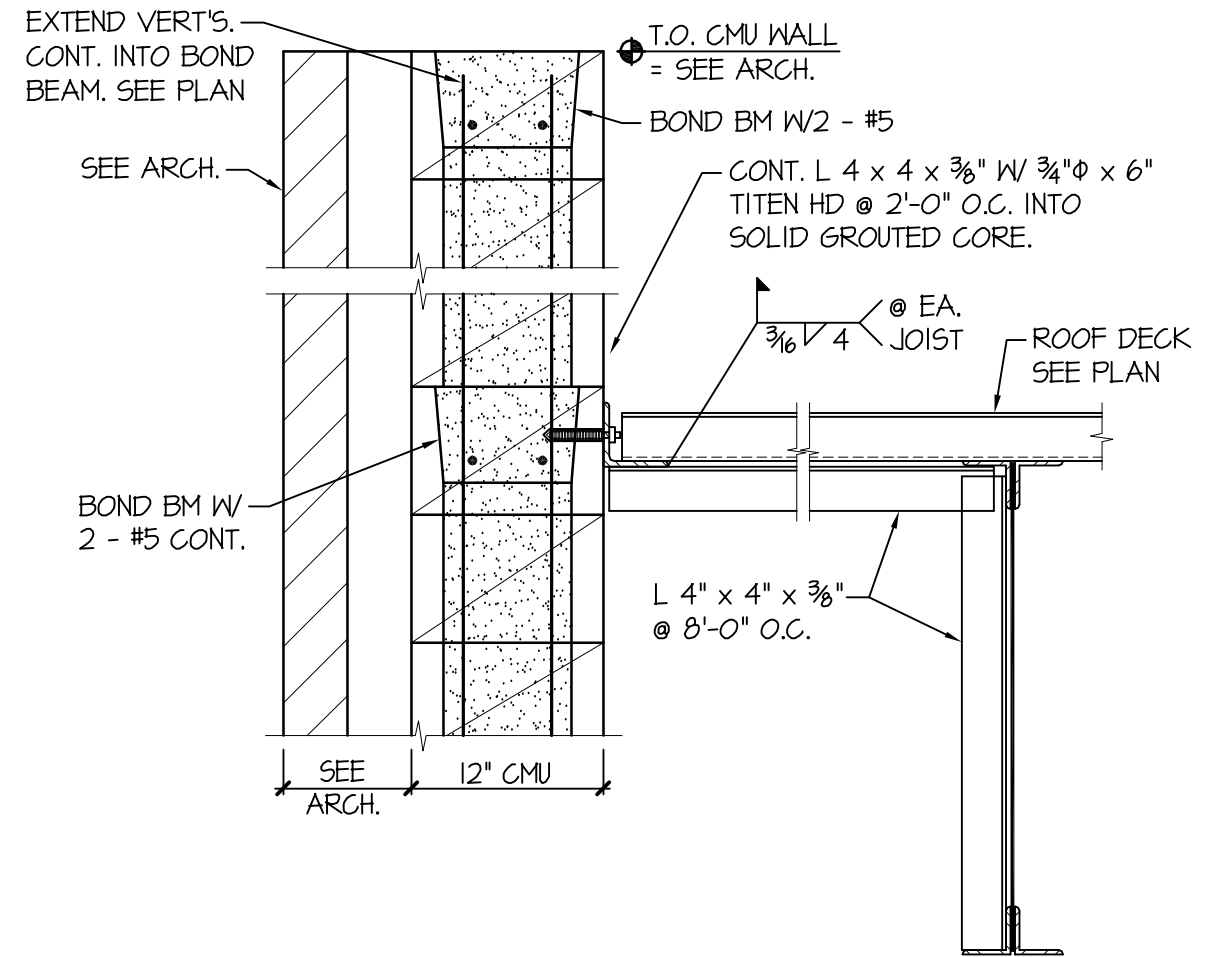
Re Addendum 1 - Ref. Sheet - S2.2

By EAG/GH



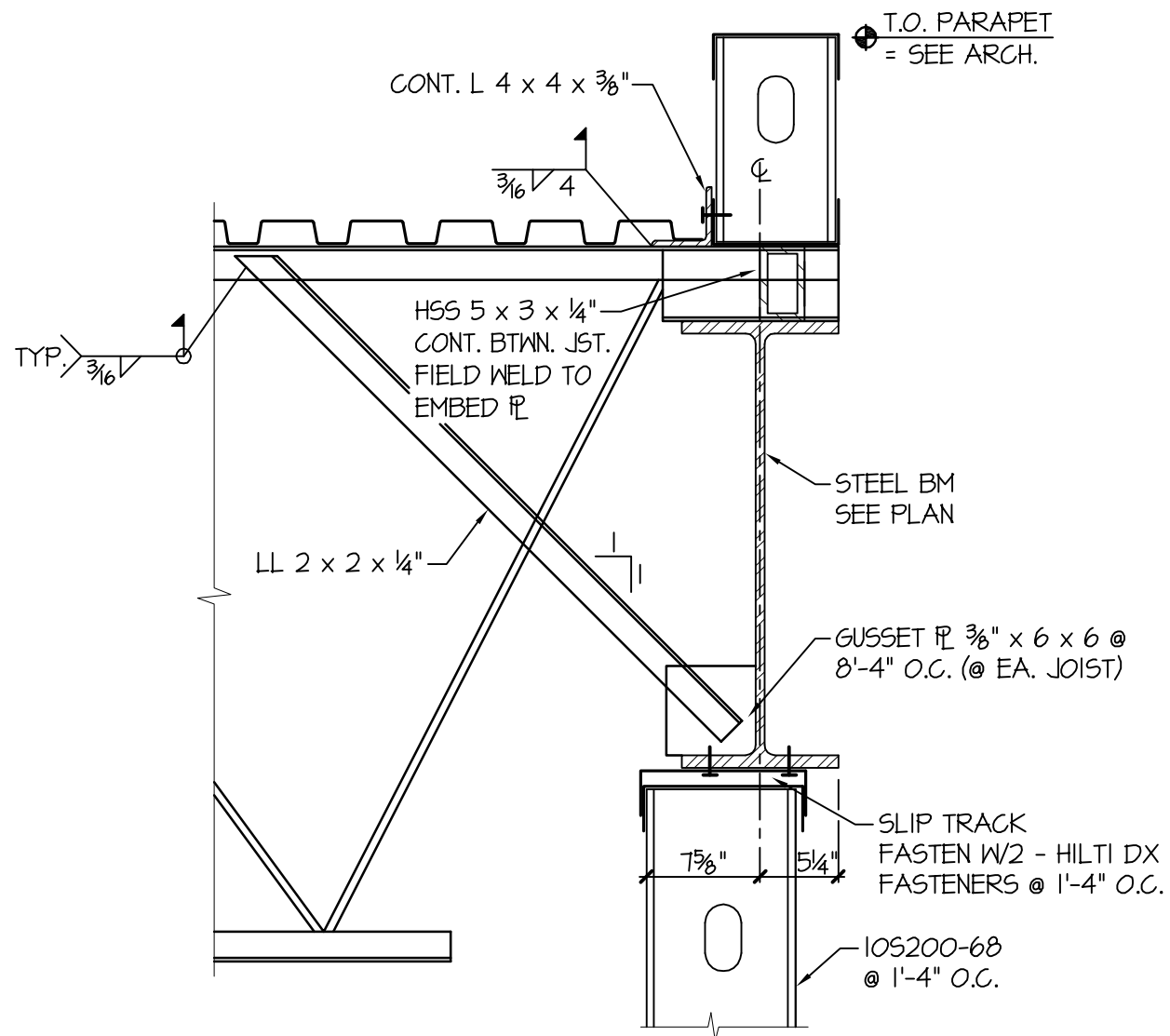


1  
6  
54.2  
LH JOIST BRG. @ GYM  
1" = 1'-0"

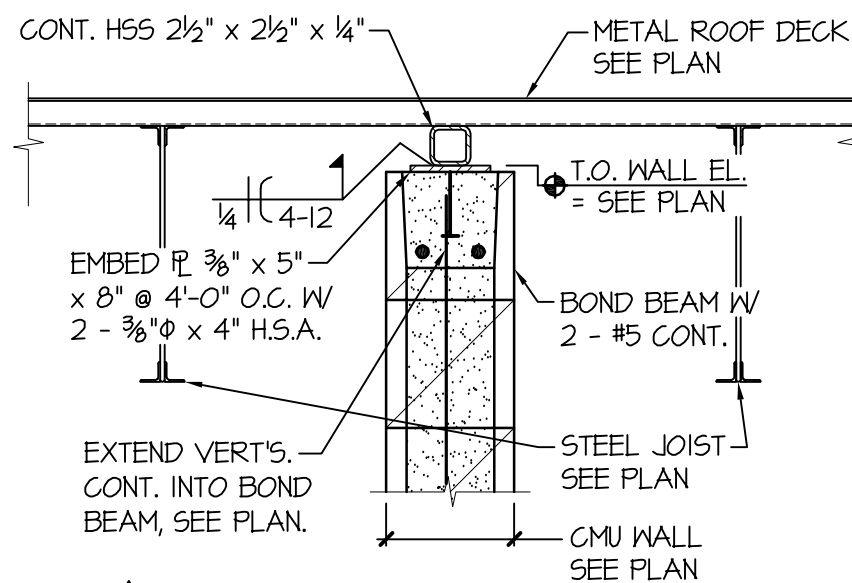


1  
7  
54.2  
DECK BRG. DETAIL - GYMNASIUM  
1" = 1'-0"

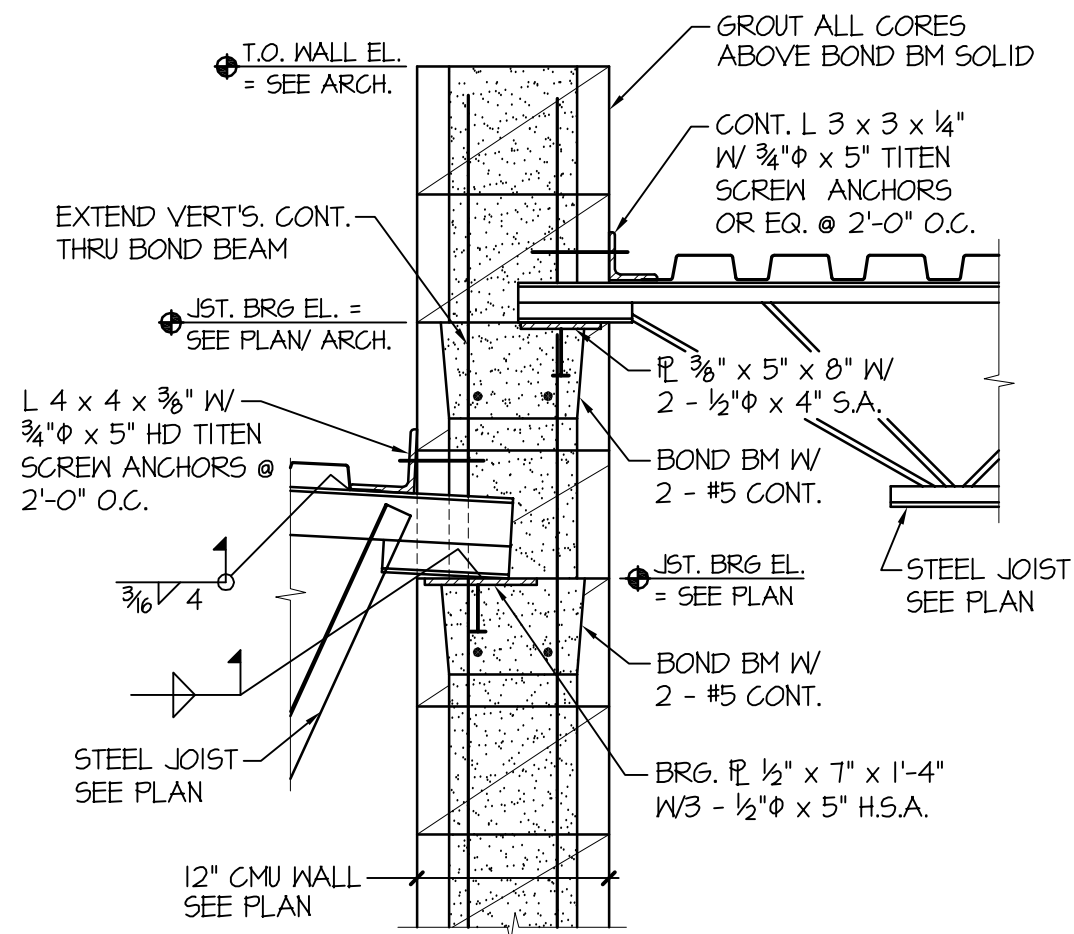




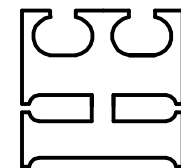
8 JOIST BRG. DETAIL  
54.2 1" = 1'-0"



10 DECK BRG. DETAIL  
54.2 1" = 1'-0"



9 JOIST BRG. DETAIL  
54.2 1" = 1'-0"



**HEYER ENGINEERING, PC**  
**STRUCTURAL CONSULTANT**

1020 36th Street SW, Fargo, ND 58103  
(P) 701.280.0949 (F) 701.280.9686

Project Moonhead Area Public Schools Improvements

Probstfield Elementary School Addition

Moorhead, Minnesota

Re Addendum 1 - Ref. Sheet - 54.2

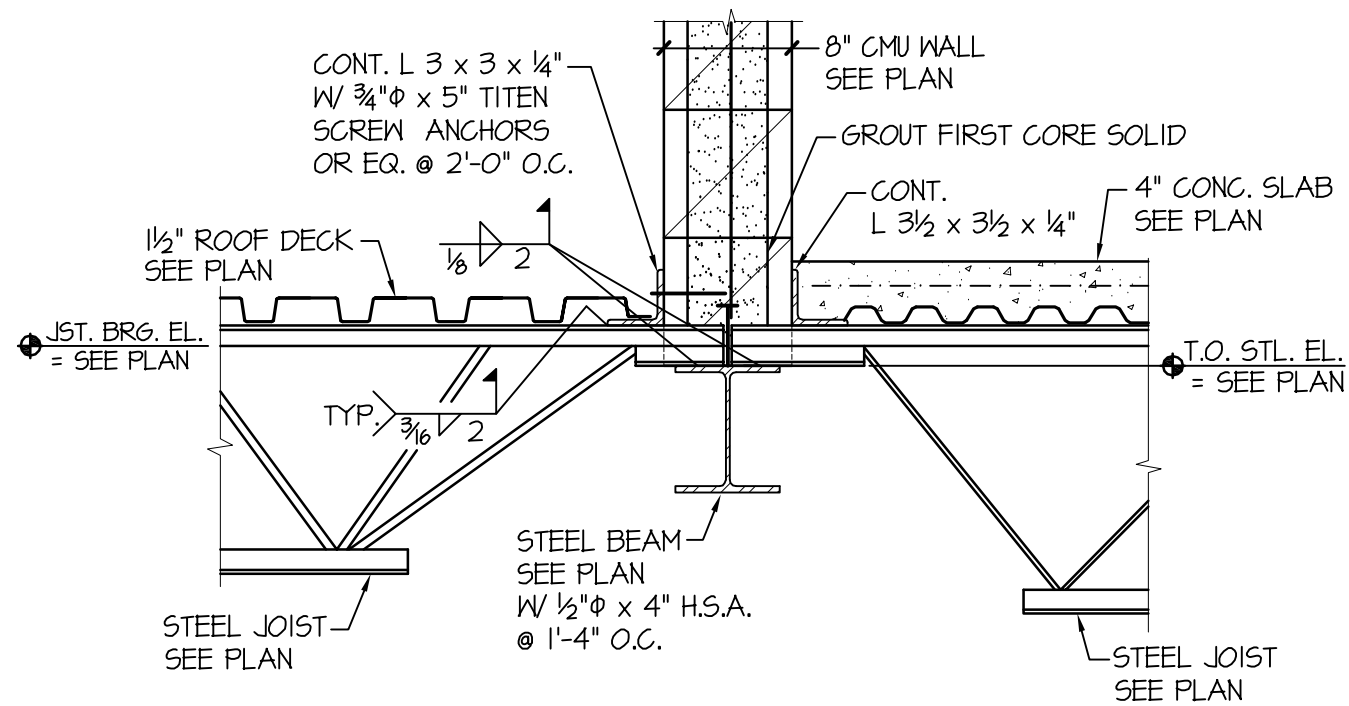
Sheet No. SA-0

Job No. 094.0054.2013

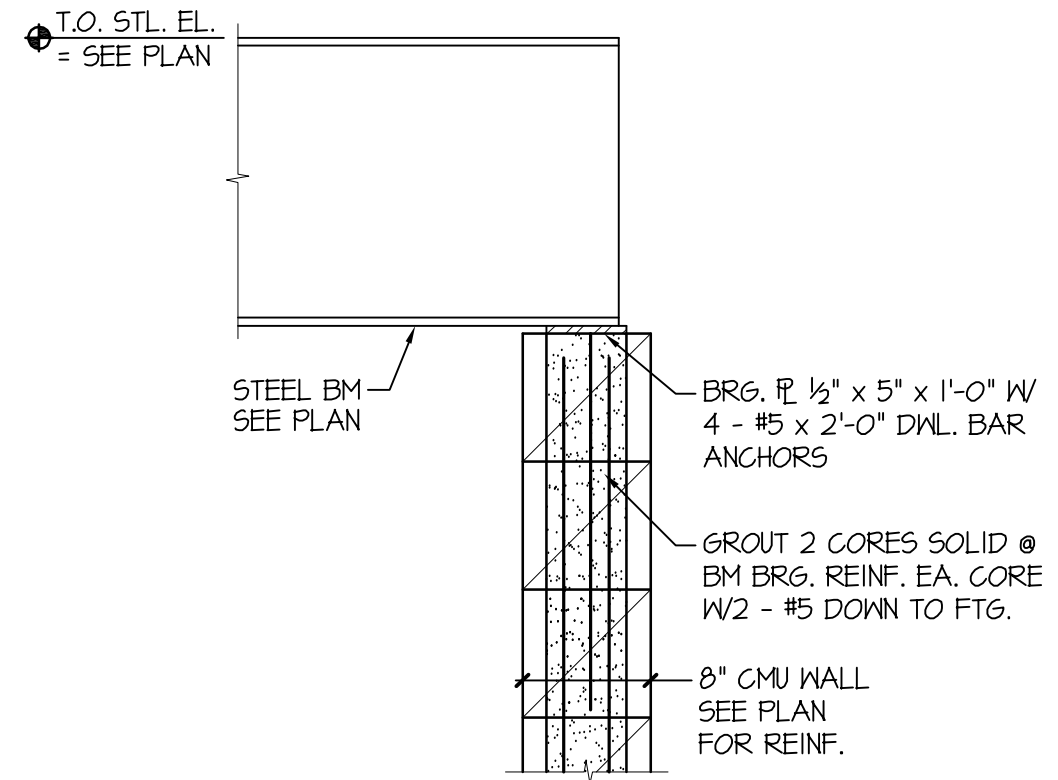
Date 4.2.2014

By EAG/CH

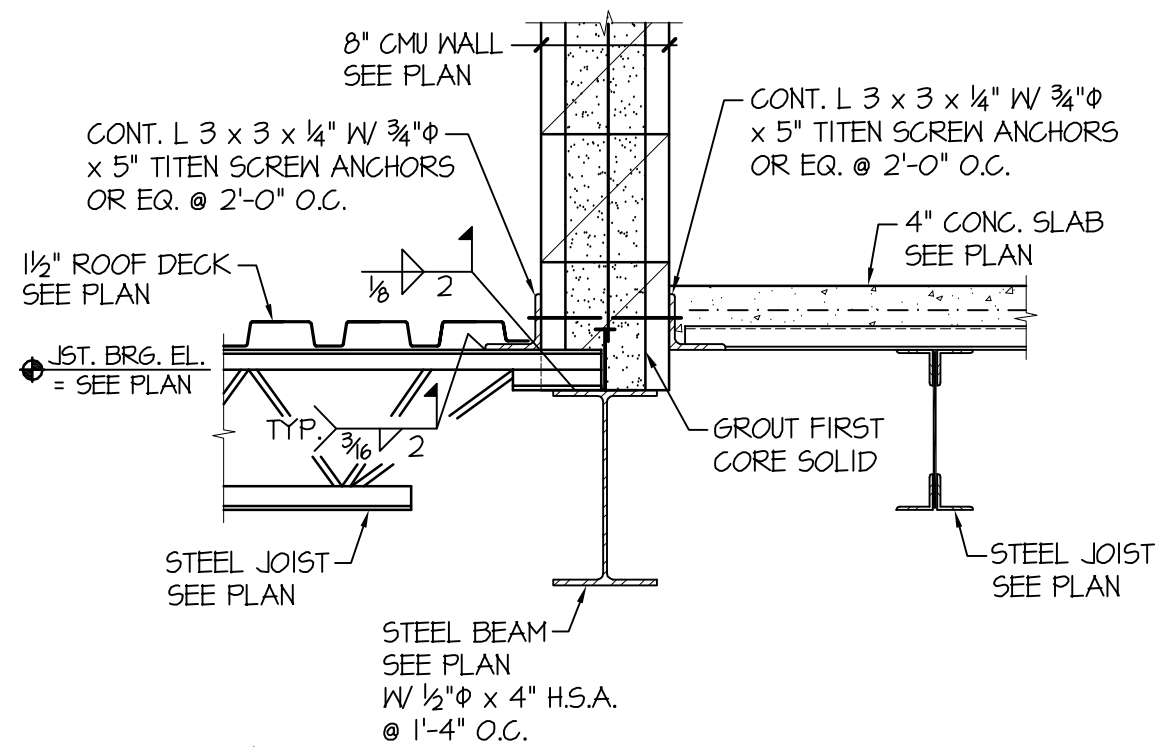




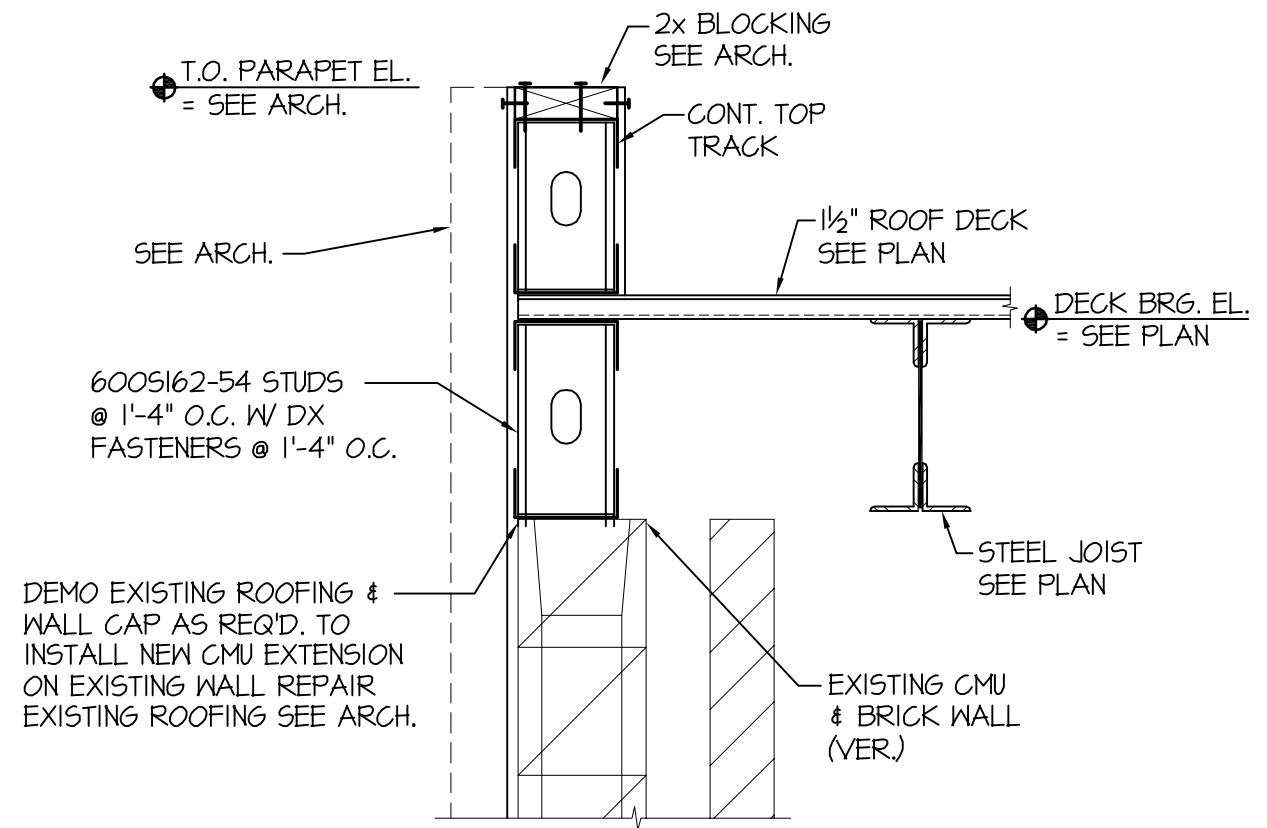
18 JOIST BRG. DETAIL  
54.2 1" = 1'-0"



19 BM BRG. DETAIL  
54.2 1" = 1'-0"



20 JOIST BRG. DETAIL  
54.2 1" = 1'-0"



10 DECK BRG. DETAIL  
54.3 1" = 1'-0"



April 4<sup>th</sup>, 2014

Jim Cole  
Zerr Berg Architects  
510 4<sup>th</sup> Ave. N.  
Fargo, ND 58102

RE: Probstfield Elementary School Addition  
Addendum No. 2 – Electrical Items  
MBN Project No. 13-229

Please include the following items in the next addendum issued for the project:

**Changes to the Drawings:**

Sheet E4.0:

1. Add addressable fire alarm modules as necessary to monitor new sprinkler zone flow and trouble conditions, coordinate with fire protection contractor.

Sheet E5.0:

1. Detail 1/E5.0 Electrical One Line: Revise feeder from SWBD to ATS to Type 250N. Add 250A/3P breaker in existing Siemens SB3 Series switchgear.

**Changes to the Specifications:**

*Section 27-5125 Sound Reinforcement Systems:*

1. Paragraph 2.02.D: Delete CD player and provide Tascam TU 690 Series AM/FM tuner for gymnasium sound system.

**END OF ADDENDUM NO. 2**